

The connection between the NAO and extreme wave heights around Norway

Sophia Groninger^{1,2,3}, Patrik Bohlinger¹, Øyvind Breivik^{1,2}, Theo Economou⁴, Ben Youngman⁴

¹Norwegian Meteorological Institute, Norway; ² University of Bergen, Norway; ³ Bjerknes Centre for Climate Research, Norway; ⁴ University of Exeter, UK



Bjerknes Centre for
Climate Research



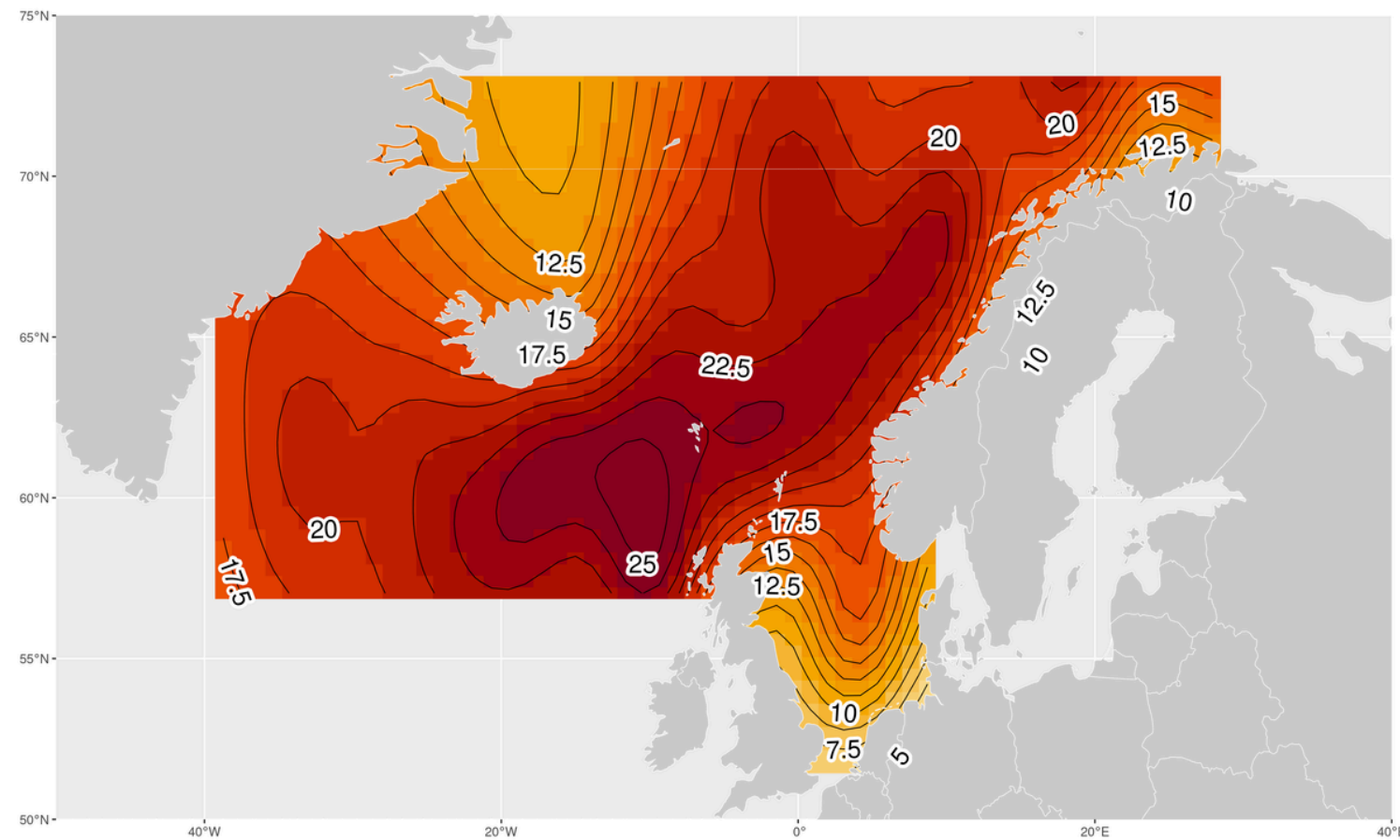
Meteorologisk
institutt

Generalised additive extreme value models

$$F_{GEV}(z; \mu, \sigma, \xi) = \exp \left(- \left(1 + \underbrace{\xi}_{\text{shape}} \left(\frac{z - \underbrace{\mu}_{\text{location}}}{\underbrace{\sigma}_{\text{scale}}} \right) \right)^{-1/\underbrace{\xi}_{\text{shape}}} \right)$$

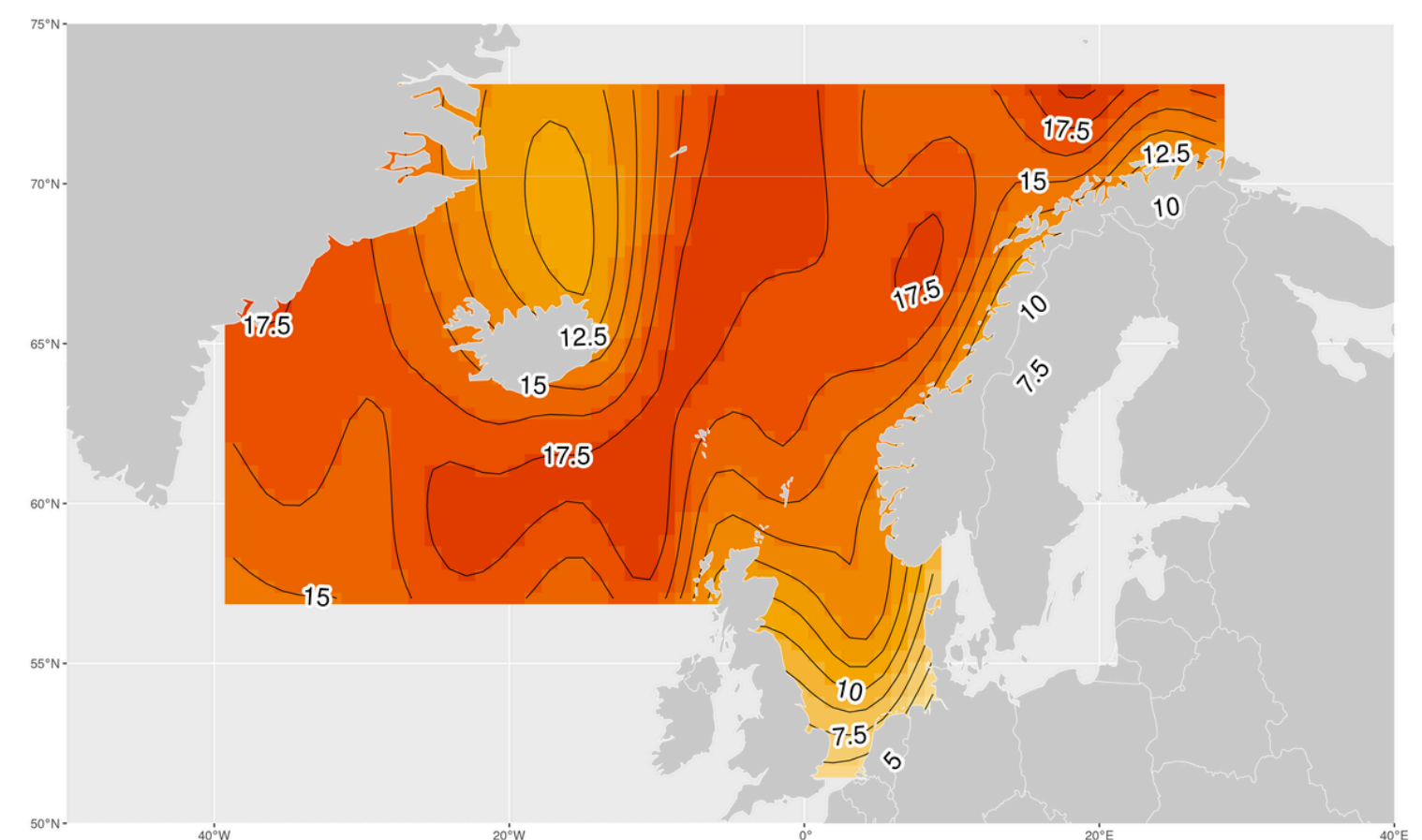
Return values

NAO anomaly = 1



100-year return values of Hs [m]

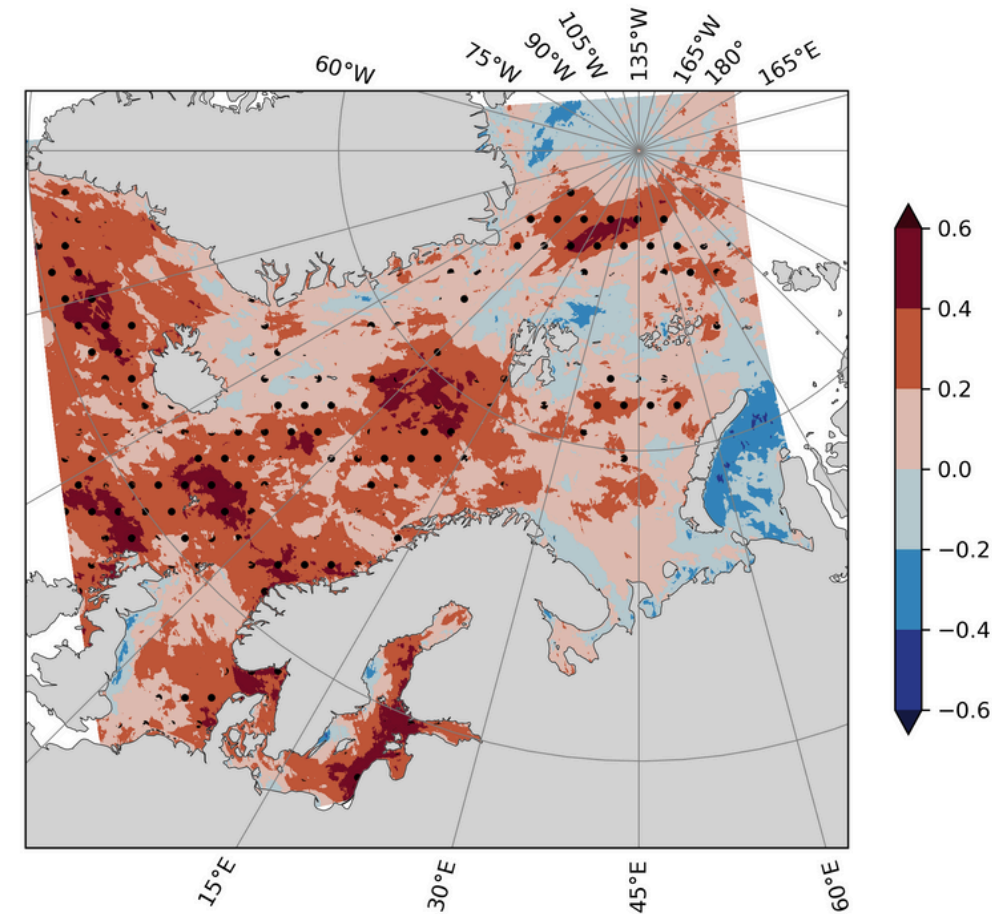
NAO anomaly = - 1



100-year return values of Hs [m]

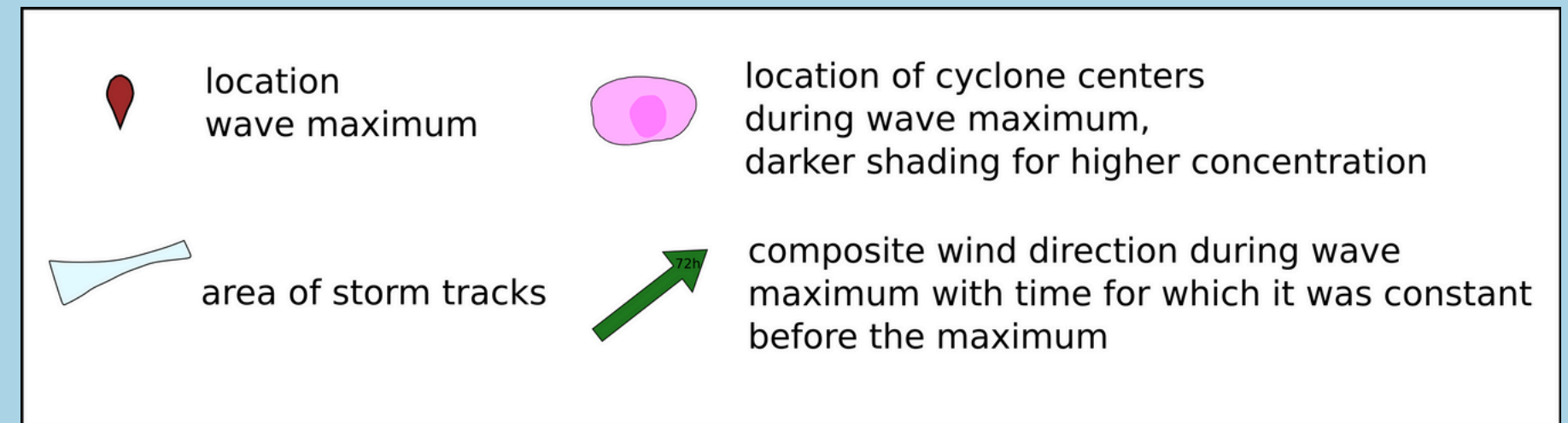
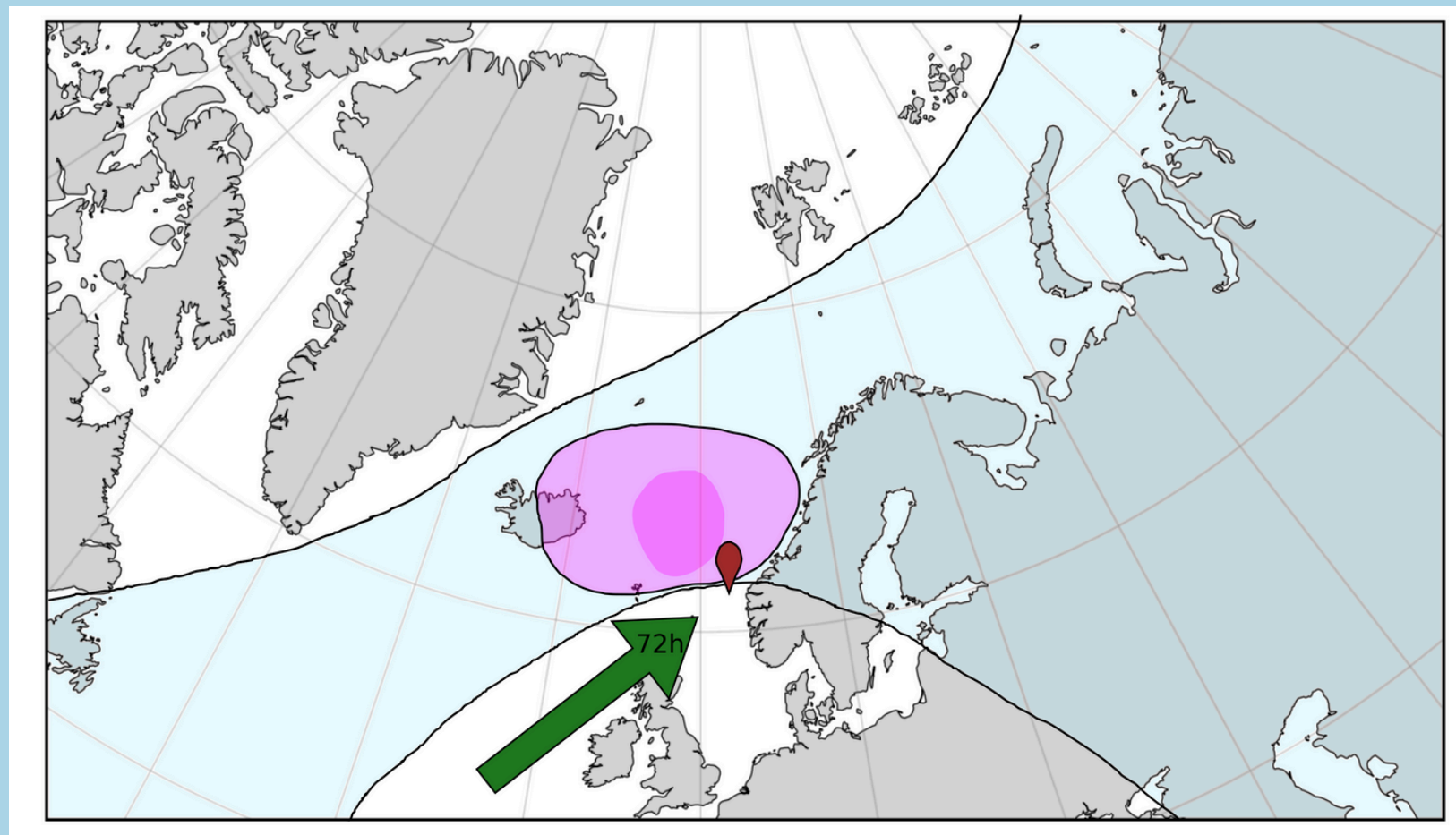
NAO influence on annual maxima

Occurrence

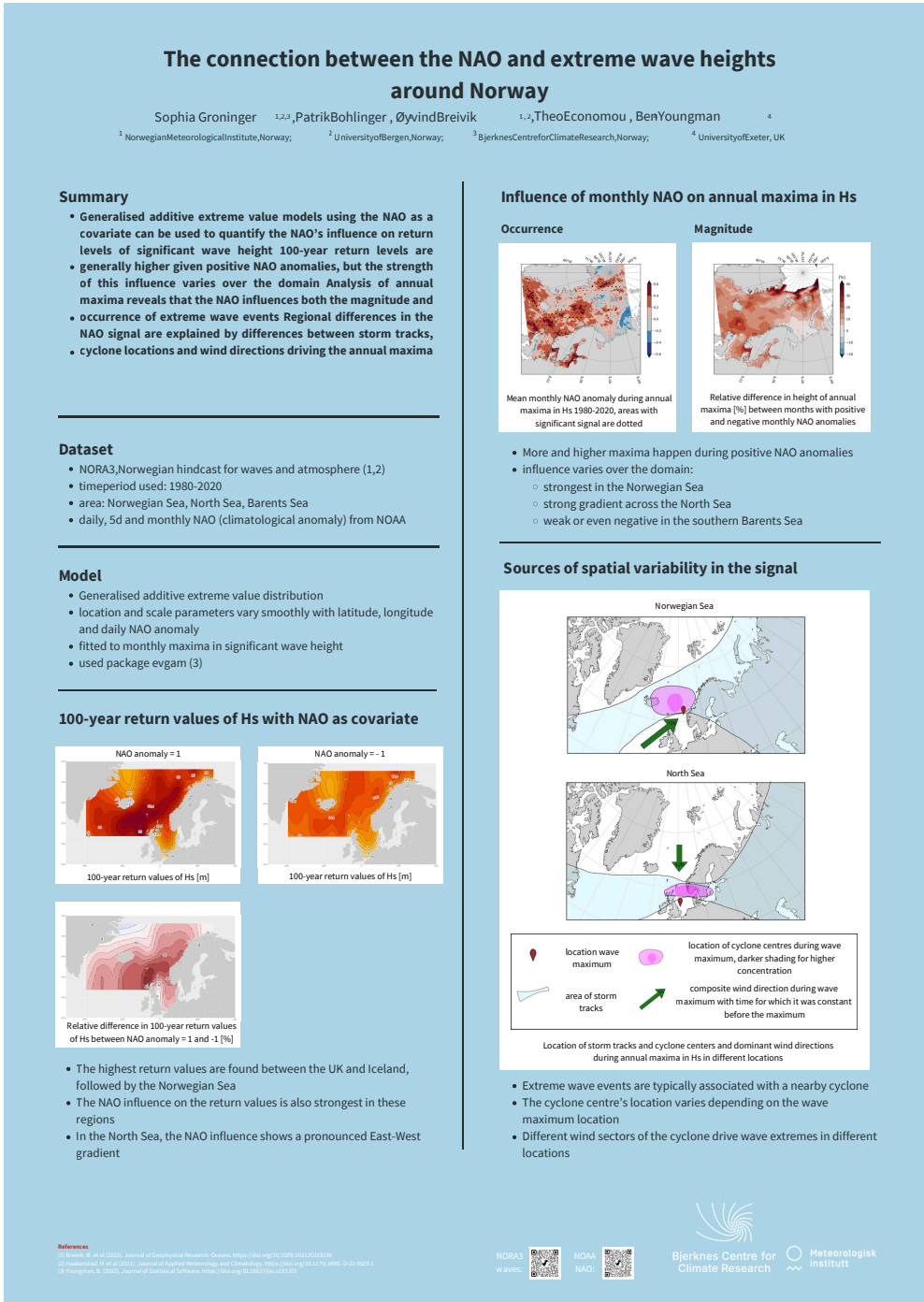


Mean monthly NAO anomaly during annual maxima in Hs 1980-2020, areas with significant signal are dotted

Atmospheric situation during annual maxima



Come around for a chat if you are interested in...



- Generalised (additive) extreme value models and modelling choices
- The relation between cyclones and extreme Hs

Sophia Groninger
Norwegian Meteorological Institute
sophiag@met.no