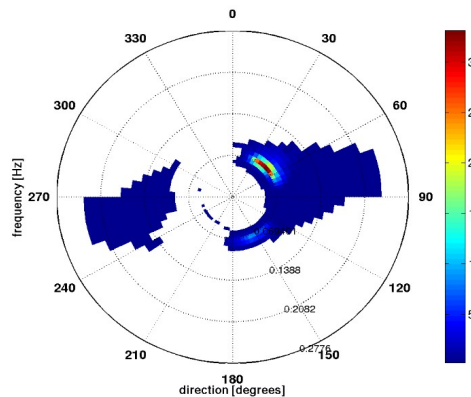


On the upgraded assimilation of wave data in the operational wave model MFWAM

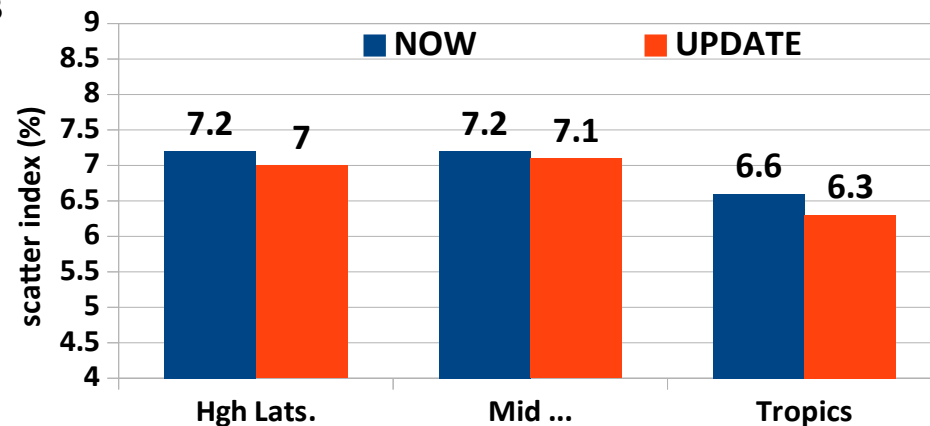
L. Aouf⁽¹⁾, J. Bidlot⁽²⁾, A. Dalphin⁽¹⁾, L. Ferraton⁽¹⁾

SAR Wave spectrum from S1C

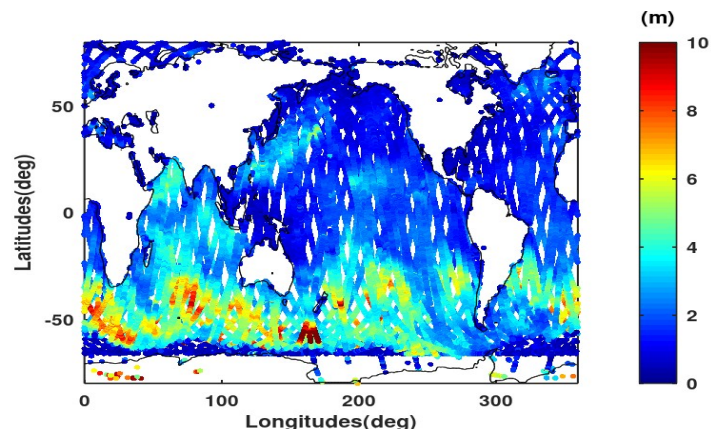


- Assimilation of S1C and HY2B
- 6-hourly currents forcing

Performance of upgraded MFWAM : 202508 Validation with HY2C



daily coverage of SWH from 9 altimeters : 20250802



Wave forecasting in cyclone GARANCE : February 2025 SWH 28 february 2025

